



life's waiting



rosecrance





**At Rosecrance we're focused on one thing: offering the best opportunity for lasting recovery.**

We are dedicated to providing quality, evidence-based addiction counseling in an environment that fosters lasting recovery. Our practical approach to addiction treatment prepares patients and families for life beyond treatment. Our enlightened staff offers the support and tools needed to rebuild lives and reclaim what has been lost.



## **History of Service**

Hope begins at Rosecrance. It has been that way since 1916 when Dr. and Mrs. James Rosecrance left provisions for their homestead to become an orphanage for boys. Through the years our services have changed as the needs of families have changed. Today, Rosecrance provides help, hope and recovery to families who struggle with alcohol and other drug addictions.

## **Holistic Philosophy**

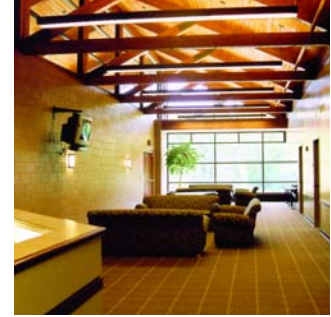
We believe that addiction to alcohol and other drugs is a chronic, primary and progressive disease with multiple causes that affect the social, physical, spiritual, cultural and emotional components of an individual's life. Successful treatment requires a comprehensive program to address problems and prepare for a lasting recovery. Our programs are based on the disease model of addiction and the 12 Step treatment philosophy.



# Adolescent Services

GRIFFIN WILLIAMSON CAMPUS  
MONARCH RECOVERY HOMES

Rosecrance adolescent programs serve youth 12 - 18 years of age who are exhibiting signs or symptoms of alcohol or other drug involvement. The special and individual needs of adolescents and their families are our primary concern. Programs are comprised of a full continuum of prevention education, intervention, outpatient and inpatient treatment services as well as two recovery homes for teens.



### Griffin Williamson Campus

Located on 50 scenic acres, the adolescent campus offers a peaceful setting with several ponds, a tranquil healing garden and a magnificent waterfall. The campus is bordered by walking paths and woods.

The 67,000 square foot, 78-bed treatment center features an on-site school, a chapel, a gymnasium and fitness center, an outdoor dining patio and open, airy living space in each patient wing. The stone fireplace, wood-beamed ceilings, warm colors, recreational space, and natural setting create an environment conducive to recovery.

Adolescent treatment is guided by individualized plans tailored to meet the unique and

“I was so grateful to find a place that offered hope to my family when life was looking its bleakest. The staff worked to give [our son] the support, guidance and the tools he needed to start to turn his life around. At Rosecrance, we felt we had finally been thrown a lifeline.”

*Mary M., mother of a Rosecrance recovering teen*

varying needs of youth and their families. The plans are evidence-based, complemented by a holistic approach to treatment that focuses on the mind, body and spirit.

Experiential activities directly related to recovery that encourage personal growth and self-recognition are a fundamental part of a teen’s treatment plan at Rosecrance.

#### Program includes:

- Initial biopsychosocial assessments
- Residential inpatient treatment
- Outpatient treatment
- Partial hospitalization
- Gender-specific counseling
- Dual diagnosis
- On-site school
- Integrated experiential therapies
- Extensive family education
- Post discharge support/  
Recovery Lifeline
- Alumni services



### **Monarch Recovery Homes**

Monarch is a long-term residential recovery program for adolescents. This program is designed to develop independent living skills and provide ongoing support, safety and counseling in a drug-free environment for adolescents who have completed a primary treatment program.

Rosecrance has two Monarch Recovery Homes: a beautifully restored, turn-of-the-century home in a residential neighborhood and a warm, prairie-style home on the Griffin Williamson Campus.

Through this gender-specific program, adolescents learn to overcome barriers that hinder

“Monarch was my last chance to get my life on track, and I know that I am one of the lucky ones. I am so happy to finally be able to enjoy life again—drug free.”

*Joanna, Monarch alumna*

them from engaging in lasting recovery.

Services focus on developing the skills and personal characteristics needed to live independently in the community and/or effectively reintegrate with families or caregivers.

An individualized transitional living plan is developed for each resident. Qualified professionals, under the management of a clinical director, provide 24-hour supervision.

#### **Program includes:**

- Individual and group counseling
- Family education and counseling
- 12 Step meetings
- Secondary, higher and vocational education opportunities
- Interpersonal skills training
- Life skills building
- Recreational activities
- Relapse prevention
- Discharge planning for successful reintegration



# Adult Services

HARRISON CAMPUS  
HOMEBASE RECOVERY HOME  
HEALTH CENTER

It doesn't matter if the struggle with addiction to alcohol or other drugs is a new one or a lifelong one. Rosecrance has the specialized services and knowledgeable staff essential to achieving lasting recovery. Our program is designed to provide a therapeutic milieu conducive to treatment for adults 18 years and older.



### **Harrison Campus**

This contemporary 49,000 square foot, 56-bed residential adult treatment center houses a full continuum of inpatient and outpatient services, including the Medically Assisted Recovery Clinic (MARC) that offers an alternative, evidence-based treatment program for opiate-addicted individuals.

Nestled on 10 acres of park-like grounds, Harrison Campus features a serenity walking path, group seating areas, an open-air dining patio, outdoor recreational space and a playground for children. The childcare center, chapel, and fitness center serve to further enhance the treatment environment.

“The biggest compliment that I can give is that I am out in the world, and I am still sober. I can now see my triggers and adjust my behavior. I am confident that if I use the tools that I was taught, I won’t pick up a drink.”

*A Rosecrance alumnus*

#### **Program includes:**

- Initial biopsychosocial assessments
- Detoxification services
- Inpatient treatment
- Partial hospitalization
- Outpatient treatment
- Suboxone treatment
- Gender-specific programming
- Young adult program for men
- Dual diagnosis
- Wellness programming
- Special outpatient programs for women with children
- Childcare services
- Family and alumni programs
- Continuing care

### **HomeBase Recovery Home**

HomeBase, located in a 10-unit apartment complex, is a transitional living recovery program for adults and mothers with their children. Residents focus on the development of essential skills necessary to maintain lasting sobriety. Qualified professionals provide 24-hour supervision.

#### **Program includes:**

- Outpatient counseling
- 12 Step meetings
- Life skills training
- Relapse prevention
- Recreational activities
- Discharge planning



## Health Center

The Health Center, located at the Harrison Campus, is designed to consolidate detoxification and medical services under one division to better serve the needs of our patients. Physicians, nurses, health specialists, unit technicians and addiction counselors work together with the patient to ensure that physical and medical concerns are addressed.

The 24-bed, medically monitored, detoxification unit provides a safe, therapeutic environment to withdraw from alcohol and/or other drugs. In this type of protected setting, successful detoxification is far more likely to occur and is more cost

“Tomorrow my son will have one year of sobriety ... I want to give you and the staff that worked with him a Great Big Thank You. Without your efforts, he could not have ever dreamed of any kind of a recovery.”

*A grateful mother*

effective in comparison to acute hospital inpatient detoxification.

In conjunction with their stay at the Health Center, patients are introduced to treatment options and are encouraged to explore which program will provide them with the best opportunity for lasting recovery.

### Program includes:

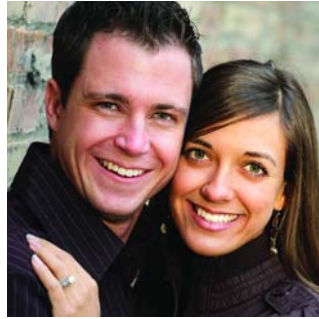
- 24-hour admissions
- Consolidated detoxification and medical services
- Patient Access Counselors (PAC) who assess every individual
- Discussion of treatment options that meet the patient's individual needs
- Discharge planning and management of referrals



# Family & Alumni Programs

ADOLESCENT TREATMENT  
ADULT TREATMENT

Our Family Support Services include education weekends, support groups, family visits, individual counseling and discharge planning to help families cope with their loved one's addiction. For our alumni, we know lasting recovery comes from having continuing support.



### **Family Program**

Addiction is a family illness. Every member of the family is affected when a loved one has a problem. Family members can play an important role in contributing to their loved one's recovery by learning about this disease.

The Family Education Program, in conjunction with individualized family counseling services, helps every member of the family learn about the disease of addiction in a holistic manner. Our family programs are designed to provide answers to questions—not only how to cope with a loved one's addiction, but how the experience has affected the whole family.

“Because families care so much, they often try to do too much. In the process, they sometimes get lost in enabling behavior. Our family program helps the family learn to love without enabling the disease of addiction to continue unchecked. We know treatment works. So does family education.”

*Rev. Dr. William Lenters, Rosecrance Chaplain*

The family program is a combination of education, relapse prevention tools and open discussion. Participants learn that they are not alone and are empowered to move forward with hope. Family visitations, family support groups and educational sessions are also provided on a regular basis.

### **Alumni Services**

We understand the challenges of early and lasting recovery. Support from friends in recovery and access to drug-free activities are important on the recovery road. We designed Rosecrance Alumni Services to assist on the journey.

Rosecrance Alumni Services offers many opportunities to strengthen recovery, such as: drug-free events, support groups, and recovery information.



## Outreach Services

Knowing there's a place to find answers and get help right around the corner can make a difference. To better serve the needs of our Chicago area clients, Rosecrance has located four outreach offices in the surrounding suburban communities of Frankfort, Geneva, Naperville and Northfield. And, since we're in the neighborhood, we can help schools, parents and community groups learn more about addiction.

### **Services offered:**

- Free confidential drug and alcohol evaluations
- Drug screenings
- Early intervention services
- Prevention education
- Trainings for professionals and community groups
- Assistance to families who need help finding resources



## Our Staff

Our multi-disciplinary addiction treatment team consists of physicians, psychiatrists, certified substance abuse counselors, licensed counselors and social workers, a chaplain, nurses and a consulting dietitian. Our staff is here to provide the best possible care.

Rosecrance attracts the best. We encourage and facilitate professional and personal development among our staff and provide them with the tools to administer evidence-based treatment services efficiently and effectively.

Our Staff Education Coordinator and leadership team

“Your staff is truly a class of individuals I have never seen before. True professionals. This place is the real deal ... I feel like a new person ... I never had this feeling before. I can’t thank you enough.”

*A grateful alumnus*

develop clinical trainings that empower our staff to exceed core competencies and excel.

The diversity of thought, gender, race and culture of our staff benefits an individual’s treatment experience.

Rosecrance staff are committed to their work and their patients. They are mission driven and go above and beyond their job

responsibilities to ensure that patients receive the best-quality care.

We believe in the power of lasting recovery and the strength of the human spirit.

# Ways to Access Services

## Referral Process

It takes a collaborative effort among patients, staff and referral agencies to effectively treat an individual. We pride ourselves on our prompt and thorough response to referral sources. Consistent communication with referral sources is maintained through regular contact with the patient's counselor.

## Inquiry Process

Our inquiry team is a one-stop resource for information on substance abuse and treatment options. This qualified staff is accessible 24 hours a day to schedule appointments, coordinate referral assistance (if applicable) and address treatment questions.

## Assessment/Admission

Understanding that timely treatment is important, we do all that we can to expedite assessment and admission placement. All assessments are free of charge and made by appointment. Emergency assessments/admissions are available 24 hours a day.



# General Information

## Measuring Success

Rosecrance uses independent researchers to conduct regular outcome studies for our treatment programs. These studies look at self-reported substance use as well as other legal, personal and social indicators.

The success rate for adults and adolescents completed inpatient treatment at Rosecrance is higher across the board than national comparative figures. In addition, quality of life, as measured by restored family connections, progress in work and/or school, and increased social skills, improved significantly.

## Education and Training

Rosecrance provides nursing residential training and substance abuse education to medical students and professionals. We offer consultation, speakers and seminars to groups upon request and co-sponsor numerous regional and national conferences. Rosecrance also provides a substance abuse awareness training series for interested individuals and professionals.

Rosecrance provides help, hope and recovery to children, youth, adults and families.

### *Mission Statement*

## Community Relations Team

Our community relations team serves as a liaison among referral sources, families and patients to ensure excellent communication and customer service. This team works closely with hospitals, healthcare professionals, schools, employee assistance programs, private therapists, court services and other treatment programs.

## Accreditation/Funding/Affiliations

- The Joint Commission Full Accreditation
- Licensed and partially funded by the Illinois Department of Human Services/Division of Alcoholism and Substance Abuse
- Medicaid certified
- Approved by most insurance providers; private pay accepted
- Member, Illinois Alcohol and Drug Dependence Association (IADDA) and the National Association of Addiction Treatment Providers (NAATP)

- Affiliated with Northern Illinois University College of Health and Human Sciences
- Education affiliation with University of Illinois College of Medicine at Rockford
- Affiliated with Northern Illinois Conference of The United Methodist Church

## Confidentiality

Rosecrance complies with the HIPAA (Health Insurance Portability and Accountability Act of 1996) rules, which enforce strict codes of confidentiality. Client information is only shared with authorized parties. Staff are required to sign confidentiality documentation upon hire.

## Learn more

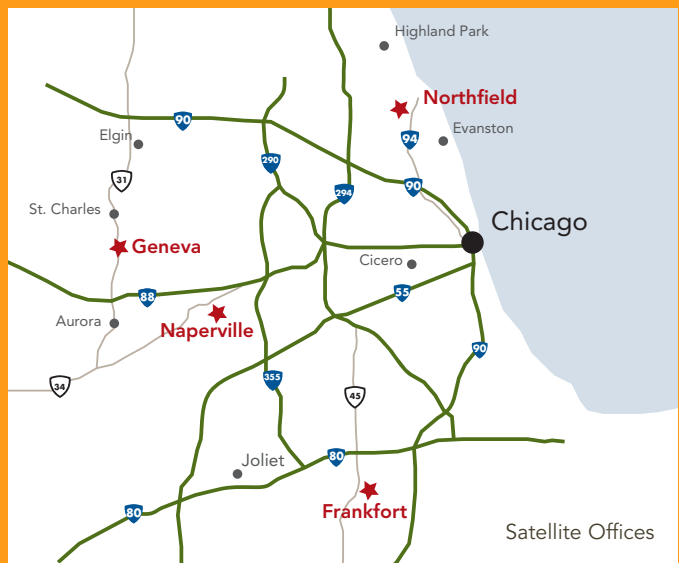
Visit Rosecrance on the web at:  
[www.rosecrance.org](http://www.rosecrance.org)  
[www.recoverystartshere.com](http://www.recoverystartshere.com)  
[www.twitter.com/rosecrancenews](http://www.twitter.com/rosecrancenews)



## Locations

Rosecrance is located near major interstate highways in Rockford, Illinois, just 62 miles northwest of Chicago's O'Hare Airport and 90 miles southwest of Milwaukee.

To make a referral or get more information, call Rosecrance at 815.391.1000 or 888.9 AT LAST.



Individuals pictured in this brochure are for illustration purposes only. The pictures portray models and are not actual clients of Rosecrance. No inference should be made, or is implied, that the pictures used here are of individuals connected in any way to Rosecrance or to its affiliates or programs.



rosecrance  
life's waiting

[www.rosecrance.org](http://www.rosecrance.org)