

Giving Hope

Rosecrance provides help, hope, recovery to children, youth, adults and families.

Treatment Strengthened Family

“Through it all, we stuck together.”



The Akerlunds, (left to right) Betty, Eric and John, value their family bond.

Betty and John Akerlund understand the desperation parents feel by the time they walk through the front door of an addiction treatment center seeking help for the unhappy, drug-dependent youngster they have in tow.

They did that with their son, Eric, when he was in high school. The family came to Rosecrance.

Eric, who's 31 now and in recovery, manages the family's landscaping business, Ack Ack, on Riverside Boulevard in Loves Park. Betty and John are semi-

retired, but they still are active in the business.

Eric is open about being in recovery because his story may bring hope to people who are battling addiction.

“Admitting to what you've been through in life says a lot about who you are,” he said. “It shows how you deal with things—if it's something you hide or something you share and help other people learn from your experience.”

The Akerlunds say Eric's recovery from addiction

plays a role in their ongoing support for Rosecrance.

Over the years, they've supported all aspects of the organization's work. Most recently, they made a substantial gift in memory of John's father, Nels Akerlund, to help build the new Monarch House. They give of their time, too, as Betty serves on the Rosecrance Health Network Board.

Betty identifies with parents whose worlds are turned upside down by their children's addictions.

“You are desperate for answers,” she said. “A lot of parents don't want to face it. It takes an awful lot of tough love and a lot of tears to get through it.”

The stakes are too high to ignore dangerous behavior, John says.

“The real struggle for parents today is that the child has to pretty near hit bottom sometimes before they accept the fact that they

continued on page 2

YOUR GIFTS AT WORK:

The Kinley Patient Assistance Fund

The parents of a young woman who received addiction treatment at the Rosecrance Harrison Campus made a donation to *The Kinley Patient Assistance Fund* in September.

In a letter accompanying the gift, they wrote:

“Today, our daughter is clean, heavily involved with her family and making a positive contribution to Rockford and our country thanks to Rosecrance.”

Gifts to *The Kinley Fund* are ripples in a pond of healing. When someone seeks help for addiction, entire

continued on page 3

inside

Editor's Corner

page 2

Salute

page 3

Sharing

page 4

Editor's Corner



Judy Emerson

I hope you enjoy this first issue of "Giving Hope," a newsletter we've created to keep donors informed about how your gifts change the lives of children and adults who seek treatment at Rosecrance.

Cover stories for this quarterly newsletter will focus on people who give of their time or treasure to help young people and adults overcome addiction and get started on a path toward lifelong recovery. In the premiere issue of "Giving Hope," we feature the Akerlunds, whose story exemplifies how treatment and sustained recovery has the power to strengthen and unify families.

In each issue, we'll introduce you to donors and friends of Rosecrance, highlight a particular giving strategy and feature a

Rosecrance program that is supported by donated dollars.

On a personal note, let me introduce myself. I joined Rosecrance in September after leaving a 22-year career as a columnist and editorial writer at the Rockford Register Star. I wrote about Rosecrance many times through the years. Every time, I was impressed by the clarity of the mission and by the integrity and dedication of staff. I am honored to be part of this team. I think you will be inspired, as I am, by the people you meet on these

pages. Without them, without you, the Rosecrance treatment staff could not deliver the high-quality services that have brought this agency national recognition.

Your support is changing lives and saving lives, every single day. Thank you. ■

Judy Emerson
Director of Development

Treatment Strengthened Family

continued from cover

have a problem," he said. "For a child today, testing things and trying this and that, hitting bottom might be death."

The Akerlunds learned about Eric's drug use through a friend of their older son, Tom. It was during one of Eric's high school summers, when he was working in the family business.

"I got him up early one morning and said, 'Since you're going to be mowing for us this summer, you need to get a drug test,'" John recalled. "He was in my car by then and he didn't have anywhere to go."

The drug test confirmed the parents' suspicions and the Akerlunds had decisions to make. They tried family counseling before seeking inpatient treatment for Eric at Rosecrance.

"Through it all, we stuck together," Betty said. "There were a lot of tough times, but you move forward."

Betty and John believe the treatment staff is Rosecrance's greatest asset.

"Each of them realizes that it just takes one person on that staff to make a difference in a child's life," Betty said. "They go beyond the 12-step program to encourage young people to become responsible, contributing adults."

Eric said his time in treatment proved to be a valuable bonding experience between him and his parents. He knew they weren't going to give up on him.

"It was hell to go through it," he said. "I would not have been able to do it without my parents. They were my rock." ■

The Kinley Patient Assistance Fund

continued from cover

families are changed. Children regain trustworthy moms and dads. Parents once again see the gleam of unclouded potential in a child's eyes.

Last year, *The Kinley Patient Assistance Fund* helped 267 people get treatment. Thanks to your gifts, those patients received almost \$300,000 worth of care.

The Kinley Fund is there to help when insurance doesn't cover the cost of treatment and when financial hardship limits what families can contribute.

Thanks to donors like you, so many families have experienced the joy of seeing a loved one get treatment at Rosecrance and walk the road of recovery after they leave our care.

Origins of *The Verna T. Kinley Patient Assistance Fund*

Established in 1984, *The Kinley Patient Assistance Fund* has distributed more than \$3 million in treatment to hundreds of patients through the years.

The fund was renamed in 1998 to honor the memory of Verna T. Kinley, a former Rosecrance board member. Kinley was a humanitarian with a particular commitment to helping at-risk children and their families. As a board member, she was dedicated to the Rosecrance policy, still in effect, that no young person will be denied treatment because of a family's inability to pay. ■

How to Give

- **If you would like to make a donation** to The Rosecrance Foundation please visit our website at www.rosecrance.org/foundation/donation.asp or send your gifts to The Rosecrance Foundation, 1601 University Drive, Rockford, IL 61107.

Upcoming Events

- **Save the date for the 2009 Rosecrance Foundation Benefit Monday, April 20, 2009.** Musical guest will be announced soon. If you would like information on becoming a benefactor or sponsor, please contact Lynne Vass, Senior Vice President of Development by calling 815.387.5602 or by email at vassl@rosecrance.net.

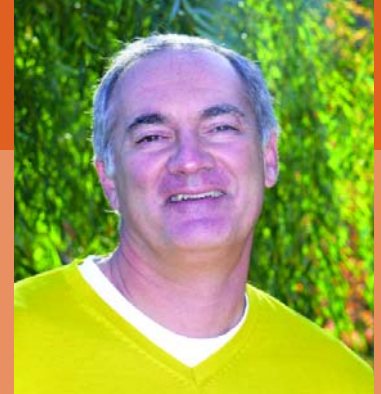
Rosecrance Salutes: Monarch Campaign Leaders

Thanks to Lisa Lindman and Bob Rhea, Foundation Board members who co-chaired the capital campaign to raise \$1.3 million to build the Monarch Marlowe House. Fourteen girls will live in the house, which opens in November on Rosecrance property just south of the Rosecrance Griffin Williamson Adolescent Treatment Center.



Lisa Lindman

- Board member since 2007
- Assistant Vice President for JTJ and C Bro Family Development Company
- Husband is Dr. Mark Lindman. They have two children.
- **Why she volunteered to lead the Monarch capital campaign:** "I believe there needs to be a transition between the brief time these young people are in treatment and when they have to assimilate back into society. They are still susceptible, and it is hard to throw them back out there into the same circumstances. The Monarch program will give them an edge to succeed in recovery."



Robert "Bob" Rhea

- Board member since 2005
- Community leader, former radio executive
- Wife is Patty Rhea. They have two children.
- **Why he volunteered to lead the Monarch capital campaign:** "I wholeheartedly believe that if you are on a board, you are expected to do something. The kids deserve this support. Beyond that, Rosecrance is a really great organization with a great staff, and it's important for them to be able to carry out a quality mission. Quality costs money."

Rosecrance Health Network
1601 University Drive
Rockford, IL 61107

Address Service Requested

Non-Profit Organization
U.S. Postage
PAID
Rockford, IL
Permit 2949

Giving *hope*

Vol. 1, Issue. 1

Senior Vice President of
Development: Lynne Vass
Director of Development:
Judy Emerson
Communication Design
Coordinator: Michelle Francis

Giving Hope is a newsletter published four times per year to inform friends of Rosecrance about people, programs and giving opportunities at Rosecrance. Rosecrance is a not-for-profit organization that has been serving families since 1916.

The Rosecrance Foundation Board of Directors

Chairman: John Griffin
Vice Chairman: David Beto
Treasurer: John Mink
Secretary: Lisa Lindman

William Brenner
David M. Cyrs
Jeff DiBenedetto
Gregory Franchini
Thomas Furst
Tim Knauf
Jerry Paris
Robert Rhea, Jr.

Sharing: IRA tax benefit extended

The Financial Rescue Package signed by President Bush in October contains provisions that benefit people over 70 ½ years old who want to make charitable donations with their mandatory distributions from Roth or traditional IRAs (Individual Retirement Accounts).

The bill makes provisions of the Pension Protection Act of 2006 retroactive to Jan. 1, 2008, and extends them through Dec. 31, 2009.

Donors over 70 ½ may request direct IRA distributions to qualified charities,

including Rosecrance, without having those gifts counted as taxable income. The cap on such rollovers is \$100,000 per individual IRA. Couples with individual IRAs each may give up to that amount.

Besides the tax-free aspect of the direct rollover for charity, such giving also may offer estate tax benefits.

If you are interested in making a gift

to Rosecrance from your Roth or IRA, please consult with your financial advisor or call Lynne Vass, CFRE, Senior Vice President of Development at 815.387.5602. ■

